



Cisco Networking Academy
Mind Wide Open

Packet Tracer Know How 1: Packet Tracer 101

Eric Kwok

CCIE RS #43698

Technical Manager, Greater China &
Japan

Feb 2015



Packet Tracer 6.2

You can find PT Know How 101 at:

<https://www.netacad.com/group/offerings/self-e>

<https://www.netacad.com/group/offerings/comr>

To download PT 6.2, go to

<https://www.netacad.com/group/offerings/packe>

click the link in “Resource Folder” at the bottom of the page.



New Packet Tracer Course and Version

Become an Expert at Packet Tracer

[ENROLL NOW](#)

Complete our new Cisco Packet Tracer course for guidance in navigating user interfaces, building virtual network topologies, and completing Packet Tracer activities. It teaches you how to use Packet Tracer as a powerful tool.

Visit [Self-Enroll Courses](#) for more information and to enroll in this 1 hour long course. (Log in required.)



Forward



Visit our site

New Version of Packet Tracer Available

Packet Tracer is a powerful network simulation program allowing you to experiment with network designs and behavior. Version 6.2, includes fixes to many community-reported bugs and provides the following enhanced functionality:

- New devices: Cisco 819 router, Cell Tower, CO server, Sniffer
- New capability to add devices directly in physical view
- HTTP server now supports JavaScript and CSS
- FTP server can manage files used in HTTP server
- Improved IOS command support

[Upgrade to Packet Tracer 6.2](#). (Log in required.)

Packet Tracer Know How 1: Packet Tracer 101

- The first of the "Packet Tracer Know How Series" course.
- Designed for new users of Packet Tracer for self study and familiarization of Packet Tracer.
- 3 chapters, 1 hands-on activity, 1 quiz and a survey.
- By taking this course, student will get a basic understanding of Packet Tracer:
 - ✓ the navigation of main user interfaces
 - ✓ the difference between logical view and physical view
 - ✓ how to build a simple network topology
 - ✓ how to complete a Packet Tracer Activity
- Recommended length of study is 1 hour
- Enroll into the course:

<https://www.netacad.com/group/offerings/self-enroll-courses>

Call for Action:

- Enroll into the course
- Contact your TMs if you want to build a community course

You can find PT Know How 101 at

Self-Enroll Courses

Our self-enroll courses can help you learn new concepts, develop new career skills, and expand your understanding of the latest technologies. Courses are designed to complement the instructor-led, core NetAcad ICT courses.

Topics covered in these courses reflect market research and reports from global employers that the skills gap is growing for essential networking technologies such as security, voice, and wireless, and for emerging technologies such as data center, cloud, and video.

Use the links below for more information and to enroll:

- Choose from any of the free, online courses to create your own personal learning program
- Take a course at your own pace, in places and at times most convenient to you
- Gain in-demand, employable skills

Students can visit the [Networking Academy Facebook page](#) for community and peer support for self-enroll courses.

Courses that include an instructor-led option may be offered by instructors in a Cisco Academy classroom. Instructors can teach these offerings through the same process used for other Networking Academy courses.

For more information, please review the [Self-Enroll Courses FAQs](#).

Introduction to the Internet of Everything (IoE)	Learn More	Enroll (English)
Be Your Own Boss Module 1: What is a Technopreneur?	Learn More	Enroll (English)
Entrepreneurship	Learn More	Enroll (English) Enroll (Arabic) Enroll (Chinese-Traditional) Enroll (Spanish)
Introduction to Cybersecurity	Learn More	Enroll (English)
Get Connected	Learn More	Enroll (Brazilian Portuguese)
Packet Tracer Know How 1: Packet Tracer 101	Learn More	Enroll (English)

Community Developed Courses

Community developed courses are learning materials that have been developed through partnership with instructors and Cisco. The goal of these collaborative efforts is to assemble relevant content and contribute to the NetAcad community.

Community developed courses adhere to the following guidelines:

- Not a formal curriculum or offering of the Cisco Networking Academy program
- Designed to be delivered to academy students as supplemental content
- No commitment by the community or Cisco to update this content or provide any formal support to the community
- Formal instructor training has not been designed and will not be provided by Cisco
- References to source materials and participating instructor names are listed within the content

Instructors may enroll students and teach community developed courses through the same process used for other Networking Academy courses.

Cloud Primer	Learn More
Collaboration Primer	Learn More
Packet Tracer Know How 1: Packet Tracer 101	Learn More
Voice Primer	Learn More

Offerings ▾

Communities

All Resources

IT Essentials

CCNA

CCNA Security

CCNP

Health Information Networking

Community Developed Courses

Partner Developed Courses

Self-Enroll Courses

NetAcad Assessment Resources

Spotlight

▼ About

📄 Acknowledgement

📄 About Packet Tracer

▼ User interface navigation and introduction

📄 Chapter 1: User Interface Navigation

📄 Chapter 2: Working in Physical View

📄 Chapter 3: Completing a PKA

▼ Try it out! (Hands on activity)

📄 My First Packet Tracer Lab

▼ Test your understanding of Packet Tracer (Quiz)

🎯 Test your Understanding of Packet Tracer

▼ Survey

📄 End of Course Feedback

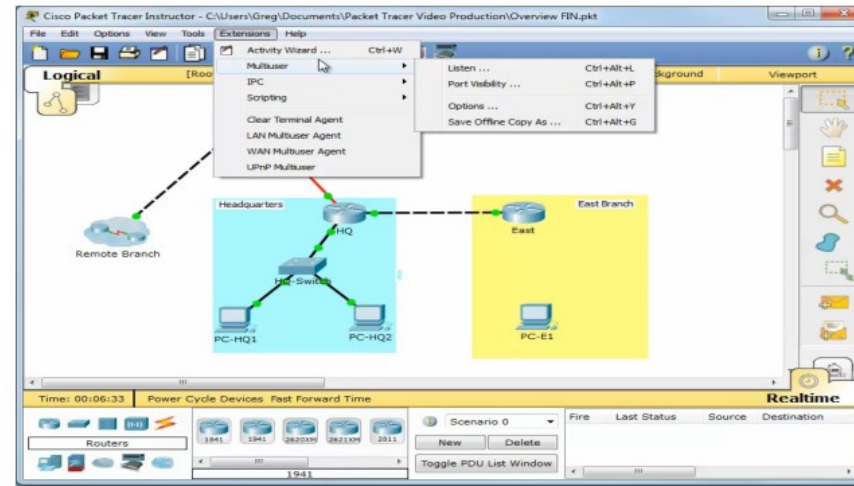
Chapter 1: User Interface Navigation

The video below will give you a brief overview of the Cisco Packet Tracer user interface.

The length of the video is 11 minutes.

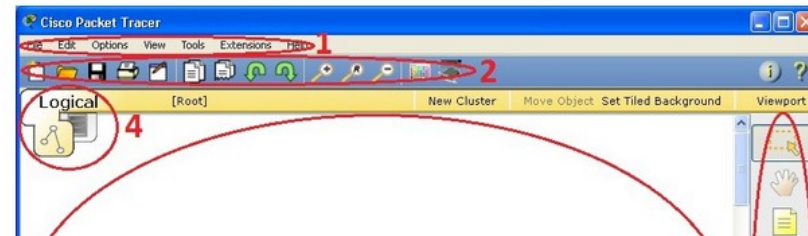
It is recommended that you launch the Packet Tracer application and try it out by following this video. You can always pause/replay the video whenever needed.

You can download the Packet Tracer file used in this demo by [clicking here](#)



Packet Tracer UI Glossary

When you open Packet Tracer, by default you will be presented with the following interface:

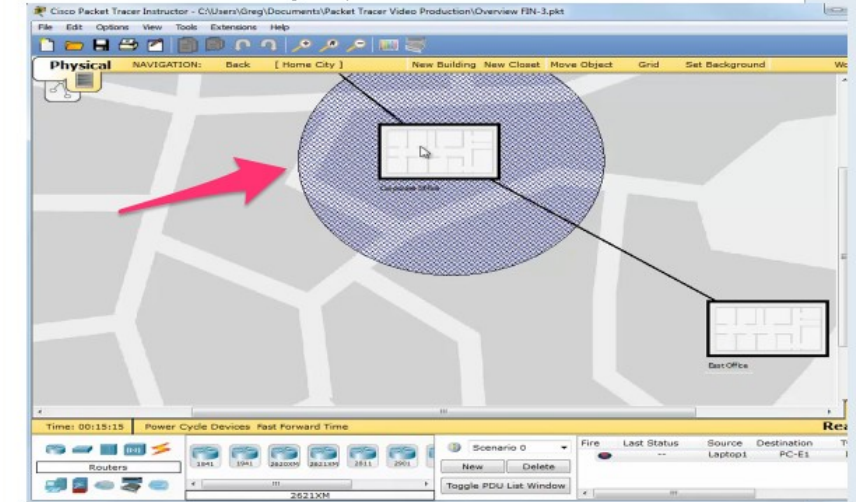


Quiz Instructions

Question 19

1 pts

What is the shaded area in the figure represent?



- Nothing, it's just a background image
- The area you can't put another building in
- The Wireless Signal Coverage
- The GPS geofencing function of a smartphone

Previous

Next



Thank you.



Cisco Networking Academy
Mind Wide Open